

ADMISSION

TO UNIVERSITI TEKNOLOGI MALAYSIA

Assoc. Prof. Dr. Kasim Jalil

**Director
Student Recruitment & Admission Division (SRAD)
Universiti Teknologi Malaysia (UTM)**











WELCOME TO MALAYSIA



Academic Staff
with PhD

1708

Postgraduates

9216

PhD Students

4659

Undergraduates

14566

International
Students

4549



Ranked

#217

In the world

Ranked

#18

Top 50
Under 50

Ranked

#46

University
In Asia



Asia Top 10 Young Universities



Ranked 5 Stars Overall in QS World University Rankings



Malaysia's Premier University In Engineering & Technology

UTM Johor Bahru Campus

Green and Sustainable Eco Tourism Campus

UTM Johor Bahru Campus is no longer just an Institute of Higher Learning.

With a total size of 1,222 hectares, students can enjoy Mother Nature's serenity in the city without its distractions.

Attractions within the campus include the Tropical Park, Deer Park, Orchard and Observatory.

As one of the destinations listed for Visit Malaysia year 2014, visitor could indulge outdoor facilities such jungle tracking, camping, cycling, fishing, kayaking and also horse riding.





UTM Kuala Lumpur Campus

Lifestyle @ UTM Kuala Lumpur Campus

The UTM International campus is strategically located in the heart of Kuala Lumpur. Some major attractions include KLCC / Petronas Twin Tower and KL Tower, located within 3 km from the campus.

UTM Kuala Lumpur are open campus, Industry Friendly, Global & Multicultural, Life – long learning/Professional and Digital Culture.

UTMKL are keen to ensure the campus environment meet the standard and expectations of students, staff and visitors.

UTMKL also providing accredited an high-end labs, library and workplace.





WHY CHOOSE UTM?



One of the biggest mistakes students can make is signing up for a program and later learning that the program is not on the official accredited list. Make sure you do your homework and take your time in selecting the right school for your career. If in doubt, ask!

Picking the right school often isn't enough, you should also have a good understanding on how to ensure your career is a successful one by making the proper choices early in your career. Did you know that [simply working hard](#) is often not enough? Why [you won't get promoted](#) even though you think you deserve it and [why your boss won't like you](#).

- [EA](#) - (Engineers Australia)
- [Engineers Canada](#) - (Engineers Canada)
- [IEET](#) - (Institute of Engineering Education Taiwan)
- [HKIE](#) - (The Hong Kong Institution of Engineers)
- [EngIRE](#) - (Engineers Ireland)
- [JABEE](#) - (Japan Accreditation Board for Engineering Education)
- [ABEEK](#) - (Accreditation Board for Engineering Education of Korea)
- [IPENZ](#) - (Institution of Professional Engineers NZ)
- [IES](#) - (Institution of Engineers Singapore)
- [ECSA](#) - (Engineering Council of South Africa)
- [ECUK](#) - (Engineering Council UK)
- [ABET](#) - (Accreditation Board for Engineering and Technology)
- [Malaysia](#) - (Board of Engineers, Malaysia)
- [MUDEK](#) - (Association for Evaluation and Accreditation of Engineering Programs)

UTM Engineering Accreditation





Global

Main Industrial Partners



Marine **ELECTRICAL** **AERONAUTICAL** Nuclear Gas Civil Gas Electrical **COMPUTER** Gas **Electrical** Nuclear Gas **OFFSHORE** Gas Computer Gas GAS **CIVIL** Gas Petroleum **CIVIL** GAS GAS **Chemical** Electrical Gas **Offshore** Gas Civil **Mechanical** Gas Civil Civil **Chemical Mechatronic** Nuclear **AUTIMOTIVE** **AERONAUTICAL** **Chemical** Marine **BIOMEDICAL** Gas **MARINE** **INDUSTRIAL** Electrical Computer **ELECTRICAL** Bioprocess Gas **Offshore** Gas **ELECTRICAL** Offshore Civil GAS Nuclear Gas Manufacturing Gas **Bioprocess** Gas Civil Gas **Material** Marine **Manufacturing** Civil **ELECTRICAL**

Engineering



Computer Science & IT

A word cloud visualization showing the frequency of different academic disciplines. The largest words are "MARKETING" and "Property Management". Other significant words include "OSHE", "MBA", "DBA", "Human Resource", "Disaster & Risk", and "MARKETING".

DBA Human Resource

MBA
 MBA
 OSHA
 DBA
 DBA
LAND ADMINISTRATION
 MBA Accounting
 OSHA
 OSHA
 OSHA
 DBA

OSHE **Human Resource** MBA DBA
Technology Management DBA OSHE

DBA MBA **Policy Studies DBA** DBA OSHD DBA
MBA OSHD MBA **MBA Innovation Management** DBA **Marketing**

Entrepreneurship

A word cloud featuring various disciplines in the built environment and geoinformation fields. The words are arranged in a dense, overlapping manner, with some words appearing larger and more prominent than others. The colors of the words include green, blue, red, and black. The disciplines listed include:

- Architecture
- Construction Science
- Geoinformation
- Industrial Design
- Landscaping Architecture
- Planning
- Surveying
- Tourism Planning
- Transportation Planning
- Urban & Regional Planning

Built Environment & Geoinformation

TVET TVET TESL SPORT SCIENCE SPORT SCIENCE
STEM Measurement & Evaluation
TESL ONLINE LEARNING STEM TVET EDUCATIONAL PSYCHOLOGY
TESL Management & Administration
TVET TESL
STEM TVET STEM TVET
STEM TVET
STEM TVET
TVET TESL TESL TVET
TVET TESL
TVET
TESL ONLINE LEARNING
STEM Multimedia Education TVET Digital Culture
TVET
STEM TVET Educational Technology
TESL STEM
Educational Psychology
TVET
TVET ENGINEERING EDUCATION

Education



Campus Life



SAFE, ECO-FRIENDLY, LIVEABLE CAMPUS





EXCELLENT FACILITIES FOR STUDENTS





RECREATIONAL FACILITIES





WORLD-CLASS LEARNING EXPERIENCE





MALAYSIA RESEARCH UNIVERSITY





ON-CAMPUS RESIDENCE FOR EVERYONE





LIBRARIES











HEALTH CENTRE



HEALTH CENTRE

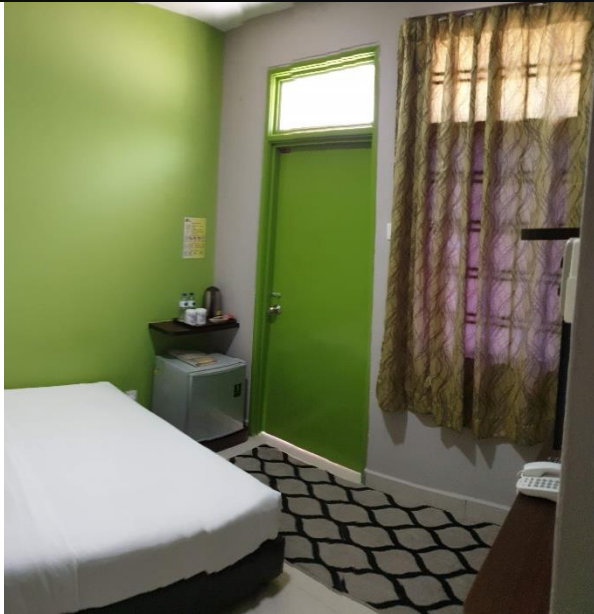


HEALTH CENTRE





HOSTEL







**UNIVERSITI TEKNOLOGI MALAYSIA
KUALA LUMPUR**



UTM KUALA LUMPUR



UTM KUALA LUMPUR

UTM KUALA LUMPUR



Mohd. Hassan Mohd Osman

UTM KUALA LUMPUR



FREE CAMPUS BUS



INTERNATIONAL COMMUNITY AT UTM



More than 4500 international students from more than 75 countries





ENTRY REQUIREMENT: BACHELOR



Senior High School Diploma/
Senior Secondary School Graduation Certificate

OTHER REQUIREMENTS:

- IELTS 5.5 or equivalent
- Pass UTM Foundation Program (1-semester)

ENGINEERING:

Scores of $\geq 85\%$ in 3 subjects:

- Mathematics
- Physics
- Chemistry/Biology

SCIENCE:

Scores of $\geq 80\%$ in any 3 of following subjects:

- Mathematics/ Physics/ Chemistry/Biology

COMPUTER SCIENCE:

Scores of $\geq 80\%$ in Mathematics and any 2 of following subject:

- Physics/ Chemistry/Biology/ICT

SOCIAL SCIENCE:

Scores of $\geq 80\%$ in any 3 of following subjects:

- Mathematics/ Physics/ Chemistry/ Biology/ Geography/
Economy/ Accounting

ENTRY REQUIREMENT: Master & PhD



Master:

A recognized Bachelor Degree with:

- CGPA 2.5/4.0 and above **OR**
- CGPA Lower than 2.5/4.0 with 5 years working experience

PhD:

- A Recognized Master's Degree in the relevant field



UTM

UNIVERSITI TEKNOLOGI MALAYSIA

See you soon in UTM!